

- CONCENTRATED
- INHIBITS SCALING AND CORROSION
- REMOVES DEPOSITS
- INCREASES EFFICIENCY
- REDUCES FOULING
- EFFECTIVE IN BOTH HARD AND SOFT WATER

## FEATURES

**MARC Closed Loop Treatment** is a non-chromate complete water treatment for hot water boilers, hot water recirculating systems, chilled water cooling systems and very small open recirculating cooling towers. It is especially formulated for the control of sludge, scale and corrosion. It contains rust and corrosion inhibitors, scale preventives, water softeners and conditioners.

**MARC Closed Loop Treatment** aids in the formation of soft sludge which can be removed during blowdown or bleed-off, preventing rock-hard deposits. It prevents oxygen from causing corrosion. It maintains the water at an alkaline level to neutralize acids formed.

**Net Contents: 5 Gallons**

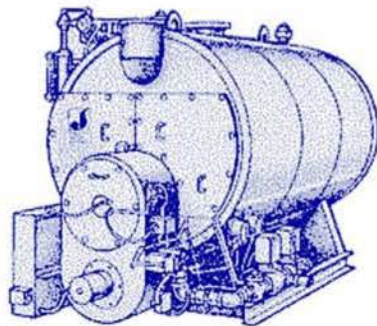


**FORTIFIED FORMULA**

# CLOSED LOOP TREATMENT

**A Complete Treatment for:**

- Hot Water Boilers
- Chiller Systems
- Recirculating Cooling Towers



**EFFECTIVE AT REMOVING SCALE,  
INHIBITING CORROSION AND  
NEUTRALIZING ACIDS**

An Exclusive Formula of

**M-210**

**MID-AMERICAN RESEARCH CHEMICAL CORP.**  
P. O. BOX 927 · COLUMBUS, NE 68602-0927 · 800-228-8508

## DIRECTIONS

Initially add one gallon for systems up to 250 gallons, then one gallon of additional **MARC Closed Loop Treatment** for each 250 gallons of water. This will protect the system under normal operating conditions. The pH should remain between 10.5 and 11.5. Blowdown or bleed-off the system periodically to remove sludge which may have accumulated. Keep container closed when not in use.

**DANGER:** Contains potassium hydroxide and sodium tolyltriazole. Causes severe skin burns and serious eye damage. Harmful if swallowed. Causes damage to gastrointestinal system if swallowed and to respiratory system if mist is inhaled. Store only in original container. Do not get in eyes, on skin or on clothing. Wear eye protection and protective gloves. Do not breathe mist, vapors or spray. Do not ingest. Do not eat, drink or smoke when using this product. Use only in a well-ventilated area. Wash thoroughly after handling. If in eyes: Rinse cautiously with water for several minutes. Remove contact lenses, if present and easy to do. Continue rinsing. Immediately call a Poison Center or physician. If on skin or hair: Remove immediately all contaminated clothing. Rinse skin and hair with water. Wash contaminated clothing before reuse. If swallowed: Rinse mouth. Do NOT induce vomiting. Immediately call a Poison Center or physician. If inhaled: Remove person to fresh air and keep comfortable for breathing. Immediately call a Poison Center or physician. If exposed: Call a Poison Center or physician. Absorb spillage to prevent material damage. Store locked up in original container. Dispose of in accordance with federal, state and local regulations. **KEEP OUT OF REACH OF CHILDREN!** HMIS/NFPA Ratings: Health-2, Flammability-0, Reactivity-0.  
MADE IN USA.



Made in USA 

RM0615