

### SAFELY REMOVES:

- Grease • Fingerprints • Water Marks •
- Heavy Soils • Film • Spots • Corrosion •

### SAFE TO USE ON:

- Stainless Steel • Copper • Brass •
- Aluminum • Chrome • Silver •
- Porcelain • Formica •

### AREAS OF USE\*:

- Restaurant Equipment • Elevators •
- Drinking Fountains • Tanks •
- Control Boxes • Restaurants • Kitchens •

*\*Use only on Food Processing Equipment in Non-Processing areas. Effective cleaning and/or rinsing with potable water is required before returning to processing area.*

### DANGER

May be fatal if swallowed and enters airways.

May cause an allergic skin reaction.



Avoid breathing fume. Contaminated work clothing must not be allowed out of the workplace. Wear eye protection, protective gloves.

**IF SWALLOWED:** Immediately call a doctor, POISON CENTER. Do NOT induce vomiting. **IF ON SKIN:** Wash with plenty of water. **If skin irritation or rash occurs:** Get medical advice/attention. Take off contaminated clothing and wash it before reuse.

**In case of fire:** Use foam, carbon dioxide (CO2), dry extinguishing powder to extinguish.

Store in a well-ventilated place. Keep cool. Store locked up.

### DISPOSAL

Dispose of contents/container to comply with local/regional/national/international regulations. Do not flush wipes.

### NFPA® RATINGS

Health: 1; Flammability: 2; Reactivity: 0



# STAINLESS STEEL WIPES

- CLEANS & POLISHES
- BRIGHTENS & PROTECTS
- PRESERVES LUSTER
- READY-TO-USE
- LEAVES A PROTECTIVE FILM
- PREVENTS WATER MARKS
- PREVENTS CORROSION
- VOC-COMPLIANT

**KEEP OUT OF REACH OF CHILDREN**

**Net Contents: 40 9.5" x 12" (24.13 cm x 30 cm)  
Pre-Moistened Wipes**

**M-284**

SOLD BY

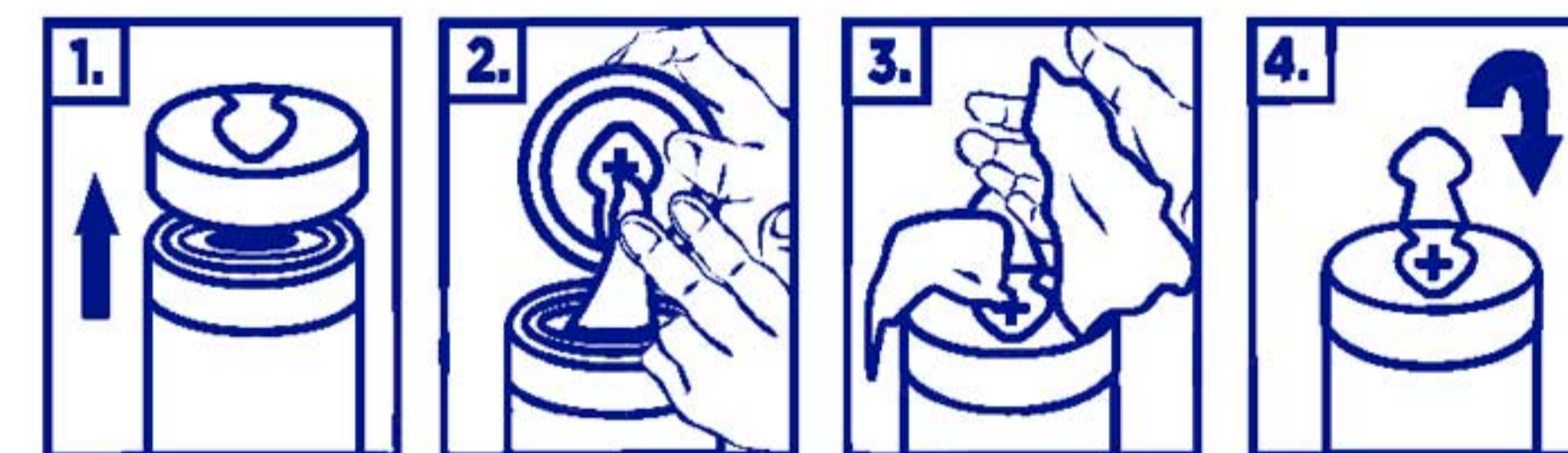
**MID-AMERICAN RESEARCH CHEMICAL CORP.**

P.O. BOX 927 COLUMBUS, NE 68602-0927

800-228-8508

### DIRECTIONS FOR DISPENSING

1. Remove lid by lifting upward. Remove foil seal.
2. Pull towel from center of the roll and thread through "X" on the underside of the lid.
3. Close lid. Pull towel at 90° angle.
4. Snap hinged cap back into place to ensure towels stay moist.
5. Do not flush wipes.



### DIRECTIONS FOR USE

Use wipe to scrub and clean surface as required. Surface may be buffed with a clean, dry cloth such as MARC 839 Micro-Fiber Cloths for a higher shine. MARC Stainless Steel Wipes leave a thin protective film to help guard against marks and corrosion.

### CONTAINS/CAS NUMBER

Isoparaffinic Hydrocarbon/64742-47-8; White Mineral Oil/8042-47-5; Blend of Nonionic Esters/Proprietary; D-limonene/5989-27-5; Perfumery Compound/Mixture

Made in the U.S.A.

For Commercial/Industrial Use Only

**R0919**